



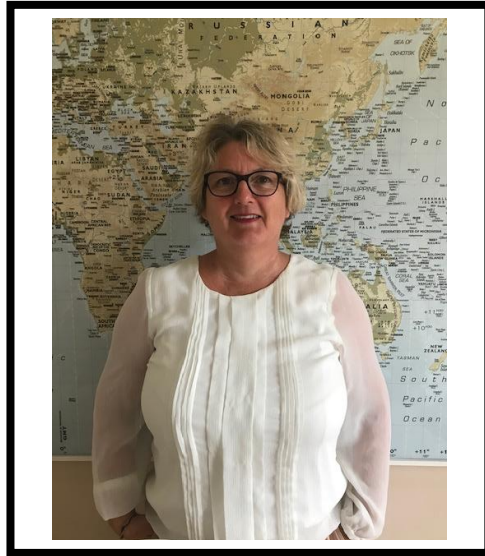
Our Lady of Peace Primary and
Nursery School.

**Welcome to
Reception!**



Welcome to Reception!

Your class is called St John and your teacher will be



Mrs Clark

Hello children, my name is Mrs Clark and I am going to be your teacher. Mrs Smith is our Teaching Assistant and will be with us in our class every day.



Mrs Smith

Here are some things that you need to know about Reception.

Things you will need to bring with you.

A coat if it's raining.



Winter Uniform



Shoes that you can fasten yourself.



Wellies to leave at school (with your *name* written in)



A sun hat if it is sunny!



Our Week



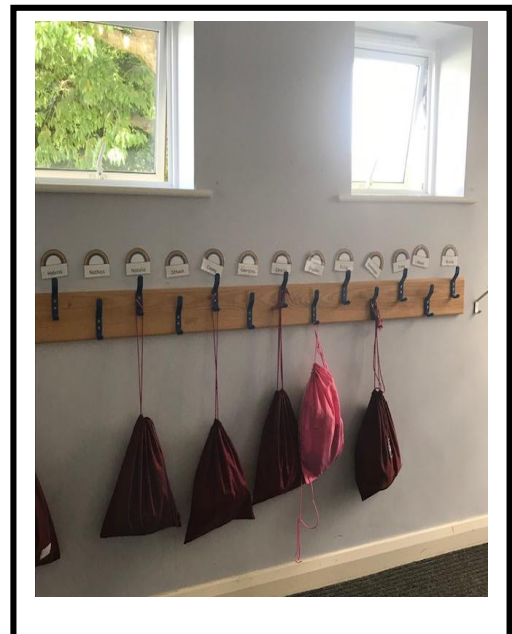
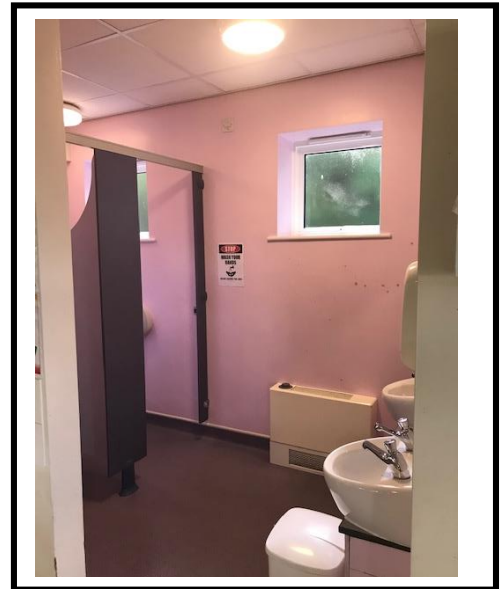
Our Lady of Peace Catholic Primary and Nursery School
RLC and RHA Weekly Timetable - Advent Term 2020 - until October half term
'With Christ in our hearts, together we grow.'



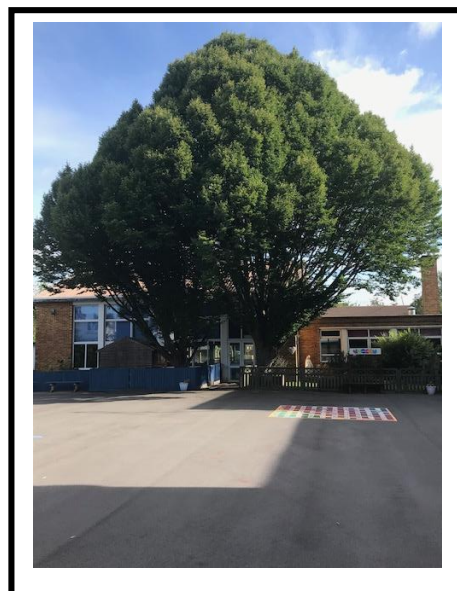
	Monday	Tuesday	Wednesday	Thursday	Friday
8.45am - 9.30am	Child-initiated learning indoors	Child-initiated learning indoors	Child-initiated learning indoors	Child-initiated learning indoors	Child-initiated learning indoors
09.30am - 09.45am	Phonics	Phonics	Phonics	Phonics	Phonics
09.45am - 10.00am	Walk a Mile/bikes	Walk a Mile/bikes	Walk a Mile/bikes	Walk a Mile/bikes	Walk a Mile/bikes
10.00am - 10.15am	Handwriting	Handwriting	Handwriting	Handwriting	Handwriting
10.15am - 11.00am	Child-initiated learning. Free flow indoors and outdoors. Adults extend knowledge and skills through quality interactions.	Child-initiated learning. Free flow indoors and outdoors. Adults extend knowledge and skills through quality interactions.	Child-initiated learning. Free flow indoors and outdoors. Adults extend knowledge and skills through quality interactions.	Child-initiated learning. Free flow indoors and outdoors. Adults extend knowledge and skills through quality interactions.	Child-initiated learning. Free flow indoors and outdoors. Adults extend knowledge and skills through quality interactions.
11.00 - 11.20am	Maths - direct teaching time	Literacy- direct teaching time	Maths - direct teaching time	Literacy - direct teaching time	Maths - direct teaching time
11.20 - 11.45am	Story, prayers, get ready for lunch	Story, prayers, get ready for lunch	Story, prayers, get ready for lunch	Story, prayers, get ready for lunch	Story, prayers, get ready for lunch
11.45 - 12.45pm	LUNCH				

12.45 - 1.15pm	Register Big writing. Large scale, fun writing session	Register Big writing. Large scale, fun writing session	Register Big writing. Large scale, fun writing session	Register Big writing. Large scale, fun writing session	Register Big writing. Large scale, fun writing session
1.15 - 2.45pm	Child-initiated learning. Free flow indoors and outdoors. Adults extend knowledge and skills through quality interactions. Children change their library books	RE- Following the Come and See program. Adult directed activities and continuous provision to meet the topic.	Child-initiated learning. Free flow indoors and outdoors. Adults extend knowledge and skills through quality interactions.	Child-initiated learning. Free flow indoors and outdoors. Adults extend knowledge and skills through quality interactions. Music.	Child-initiated learning. Free flow indoors and outdoors. Adults extend knowledge and skills through quality interactions.
2.45pm	Children and adults tidy the environment.	Children and adults tidy the environment.	Children and adults tidy the environment.	Children and adults tidy the environment.	Children and adults tidy the environment.
2.55pm - 3.10pm	End of day story and Prayers.	End of day story and Prayers.	End of day story and Prayers.	End of day story and Prayers.	End of day story and Prayers.
3.10pm	End of the day, children collected.	End of the day, children collected.	End of the day, children collected.	End of the day, children collected.	End of the day, children collected.

What does my classroom look like?



What does the rest of the school look like?



What happens at lunch time?

You can send your child with a packed lunch but we would recommend your child tries our delicious schools meals that are prepared on site.

The children will eat lunch with their class in the dining room. They will then get to play in their class outdoor area until the start of the afternoon session.

What will I be learning?

In Reception we follow the Early Years Foundation Stage Curriculum.

The teachers have planned lots of interesting activities for you to do.

In Reception we get to learn and play at the same time.

When you start in Reception it is important that we get to know each other, learn everyone's names and learn the 'rules' of the classroom so that we can play and learn together.

You will be able to play inside and outside for much of the day and in Reception we like to go outside even if it is raining or cold. Make sure you have a coat that is suitable for the weather.

It is important that we learn to read and write and learn our numbers so we will have lots of opportunities to practice these skills at school and we will give you some activities that you can do at home with your family.

Below are all of the subjects that we will be learning about in Reception.

Personal, Social and Emotional Development.

Making Relationships
Self -confidence and self-awareness
Managing feelings and behaviour

Communication and Language

Listening and Attention
Understanding
Speaking

Physical Development

Moving and Handling
Health and self-care

Literacy

Reading
Writing

Understanding the World

People and communities
The World
Technology

Mathematics

Number
Space, shape and measure

Expressive art and design

Exploring and using media
and materials
Being imaginative

Things you can do over the summer to help get ready for school.

Practise putting on and taking off your coat. Practise doing your zips and buttons.



Share books with your grown-ups every day. Talk about the pictures and why you like the book.



Practise writing your name.
REMEMBER! Only use a capital letter at the beginning of your name.



Make sure you get outside and do a lot of exercise. School can be very tiring so you will need a lot of energy.

Practise cutting up your food. The lunch ladies will help you if you get stuck, but we would like you to have a go first.



Talk to your grown-ups about all of the things in this booklet. Have a good look at the photographs so that you know what to expect when you get here.